

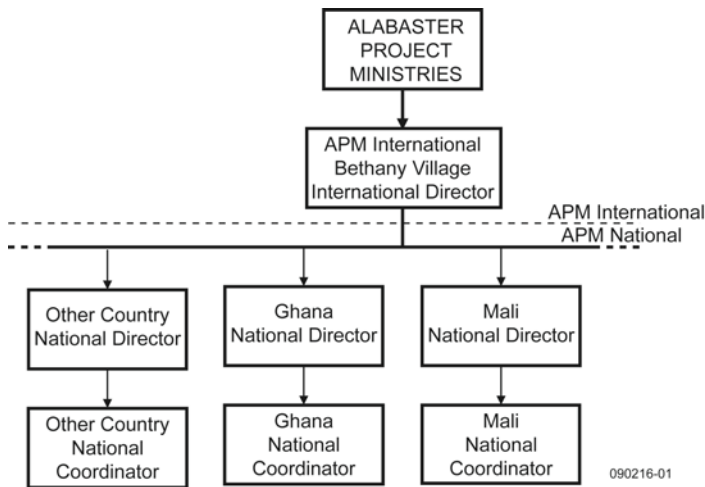
ALABASTER PROJECT MINISTRIES NEWSLETTER

Vol. 09, No. 2 – April 2009

THE NEXT STEP FOR APM

A MINISTRY PROTOTYPE FOR THE NATIONS

Alabaster Project Ministries has been in Ghana for over 10 years. During this time God has been developing a ministry prototype to be taken to other nations. At this time we are taking the steps to implement the Ghana prototype to other countries. This means that APM will have both a national and an international focus. The structure of APM might look like the following chart.

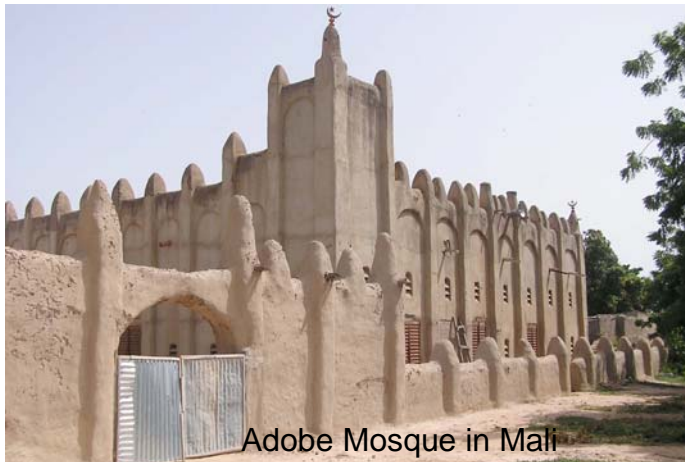


At the present, King and Priscilla will serve as the International and Ghana National directors. We will be looking for National Directors in Ghana and other countries. Pastor Zak will start as National Coordinator in the next nation beyond Ghana.

THE NEXT NATION BEYOND GHANA

MALI

King and Priscilla feel led to the country is Mali. Mali is located in the 10-40 window and is two countries north of



Adobe Mosque in Mali

Ghana in the Sahara desert. It is a large country (479,00 sq. mi.) with a population of over 90% of unbelievers. We are presently preparing with language studies (French is spoken in Mali) and looking for support for this new extension of the APM.

The country's climate ranges from subtropical in the south to arid in the north. Most of the country receives negligible

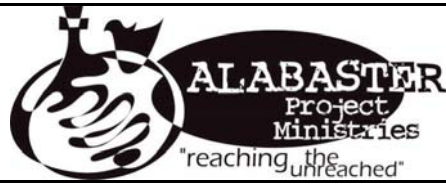


rainfall and droughts are frequent. The majority of the people are peasant farmers and raise cattle. Since the country is in the Sahara desert, it is very poor in agriculture.



Marketplace

www.alabasterproject.org
alabasterghana@hotmail.com
Telephone: 011 233 20 8164866



Alabaster Project Ministries
P.O. Box ER324
Tamale, Ghana, West Africa

The majority of the people are illiterate and the income per capita is lower than Ghana. If you ever wondered where Timbuktu was, now you know.

We are going to minister to the people of Mali through compassionate care consisting of dental and eye care, and vocational education.



Dental Outreach

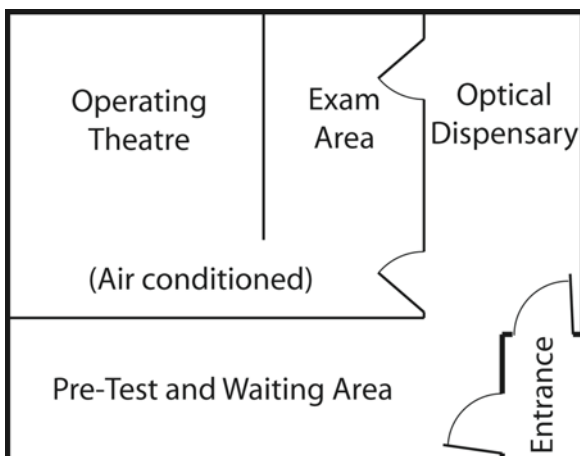
Our most important function to share the love of God with them and provide encouragement.



People of Mali

THE NEW EYE CLINIC

The new eye clinic is ready to go. We are waiting for Dr. Jim Chamberlain, an optometrist, to make a trip to help set it up and to do more training. A layout of the new eye clinic is given below. The new clinic has a waiting room, an operating theatre and an optical section where eyeglasses will be dispensed.



The new clinic provides a unique capability of ministering the love of Jesus Christ to those in northern Ghana.

THE NEED FOR SURGICAL CAPABILITY

According to a report from the United Nations, the northern region of Ghana has the worst cases of eye diseases and eye problems in the world. This is due to the dry and dusty climate of this sub-Sahara region. In addition to the dust, also for those who live near the rivers, there is a (Tsetse fly) fly that causes river blindness.

While we are able to help people see better through glasses, we are unable to help those who suffer from eye diseases. We are praying that God will bring us one or more ophthalmologists who will help us set up the surgical capability and identify surgeons who would be willing to visit and conduct eye surgery as needed.

PRAYER REQUESTS

Please pray for Alabaster Project National Directors for Ghana and Mali – people who can speak French for Mali.

Pray for additional workers in the areas of:

Administration	Bible Teaching
Farm Managing	Mechanics

Please send all contributions for the Alabaster Project Ministries to:

Alabaster Project Ministries
P O Box 15008
Fernandina Beach, FL 32035

To contact the Hammonds in Ghana write to:

Alabaster Project Ministries
P O Box ER324
Tamale, Ghana
West Africa

Or Email: alabasterghana@hotmail.com